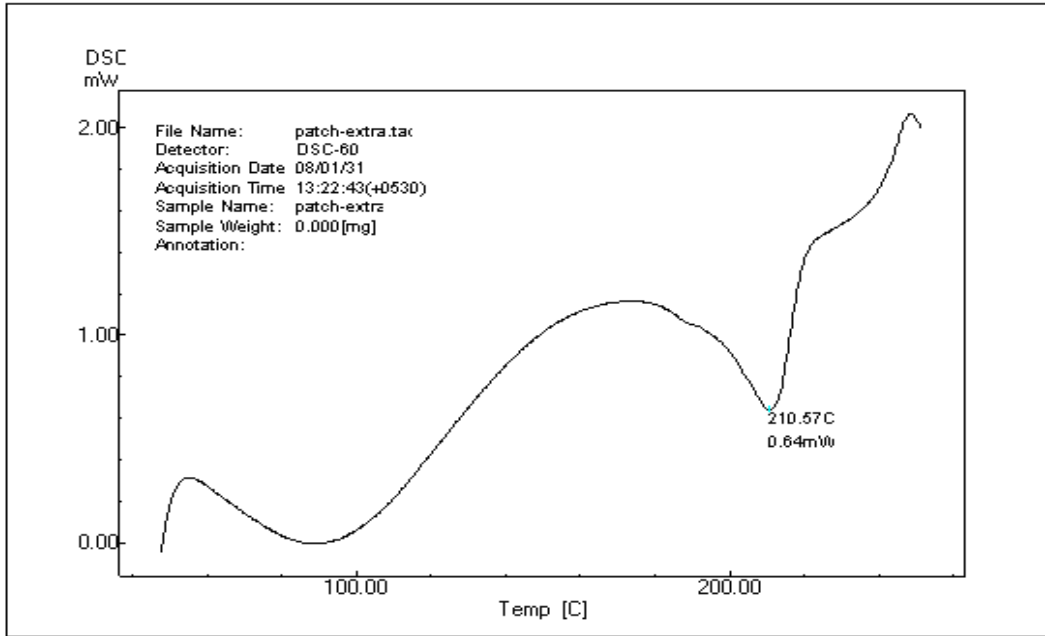


**Figure 1: D.S.C. image of Timolol maleate. Timolol maleate showed a characteristic exothermic peak at 207.70<sup>0</sup>C, which corresponds to its melting point.**



**Figure 2: D.S.C. image of Optimized Formulation 19 (Timolol maleate + PVA + PVP)**  
**Evaluation parameters.**